

LAKE VYRNWY

ACCESSIBILITY GUIDE

Hafren Dyfrdwy
Llyn Efyrynwy
Lake Vyrnwy



Email: VisitorSites@hdcymru.co.uk

Phone Number: 01691870571

Website: <https://www.hdcymru.co.uk>

Address:

Lake Vyrnwy, Llanwddyn,
Oswestry, SY10 0LZ.

RHAGOROL O'R TAP
WONDERFUL ON TAP

HAFREN
DYFRDWY

severn dee

Contents

Welcome	3
Work safe, play safe	4
At a glance	5
• Level access	5
• Access with steps	8
• Hearing	9
• Visual	9
• General	9
Getting here.....	10
Parking	11
Arrival.....	12
Getting around inside	14
Getting around outside	16
Customer care support	20

Welcome

Considered as the most beautiful lake in Wales and located just a short drive from the Shropshire border, Lake Vyrnwy will provide you with a wonderful day out where you can explore stunning countryside and nature at its finest.

Lake Vyrnwy has many trails and footpaths of varying length that cater for all abilities of walker and lover of nature. The 12-mile road around the lake is wonderfully flat and excellent for cyclist, runners and walkers alike. There is parking, picnic areas and laybys if you prefer to remain near your vehicle to enjoy the scenery. For anglers permits are available from Lake Vyrnwy Hotel or you can experience the beauty of the lake by hiring a variety of boats from Bethania Adventure. For information contact Dave Proctor on 01691 870615.

Our partners, RSPB, maintain an information kiosk near the dam and three bird hides around the lake one, which is situated in Artisan's car park, has wheelchair access.

Powys County Council Recreation Services manages public rights of way at Lake Vyrnwy in association with local landowners. There are also 'permissive' rights of way through trails and bridleways on the land owned by Hafren Dyfrdwy. You can find these on the OL239 Explorer OS Map.

Please contact Ellen Stimpson or Choe Howard for any accessibility enquires.

We hope you have a wonderful experience!



Canoeing on Lake Vyrnwy

Work safe, play safe

Hafren Dyfrdwy wants you to have a safe and enjoyable experience at Lake Vyrnwy and working together is the best way to achieve this.

What you can expect from us:

- Best practice management of the site to protect and enhance it.
- Safe access and suitable amenities.
- Useful information on site layout, facilities, rules, and recommended usage.
- A partnership approach supporting multiple usage of the site.
- We listen to your comments and act upon them.

We believe it is reasonable to expect:

- Visitors to exercise responsibility for themselves.
- Not to put other visitors or site users at risk.
- Parents, guardians, and leaders to supervise people in their care.

What we expect from you:

- Be considerate of others and the environment.
- Take responsibility for your visit and those with you.
- Please respect our rules, amenities, and our staff.
- Tell us if you see something unsafe.



Cycling at Old Village picnic area



Traditional weir located on the Dam Trail

At a glance

Level access

There is level access from Artisan's car park to:

- Coed y Capel bird hide
- Artisans' café
- Lake Vyrnwy dam
- Visitor toilet block
- Lake Vyrnwy retail units
- Visitor welcome point
- Hafren Dyfrdwy Ranger Office
- Visitor cinema and education room
- Visitor cinema toilet
- Water refill station



Artisans' car park



Visitor public toilet block



Hafren Dyfrdwy office, education room and cinema



Coed y Capel bird hide

There is level access from Main Car Park to:

- Picnic benches
- Mindfulness space
- Children's play area



Ariel view of Main car park



Level entrance into play area

There is level access from Llechwedd-Du Car Park to:

- Picnic benches
- Lake Vyrnwy viewpoint



Llechwedd-Du car park



Llechwedd-Du picnic area

There is level access from Old Village car park to:

- The Giant Hand of Vyrnwy
- Picnic benches
- Lake Vyrnwy viewpoint



Old Village picnic area



Old Village lower car park



Trail to the Giant Hand of Vyrnwy



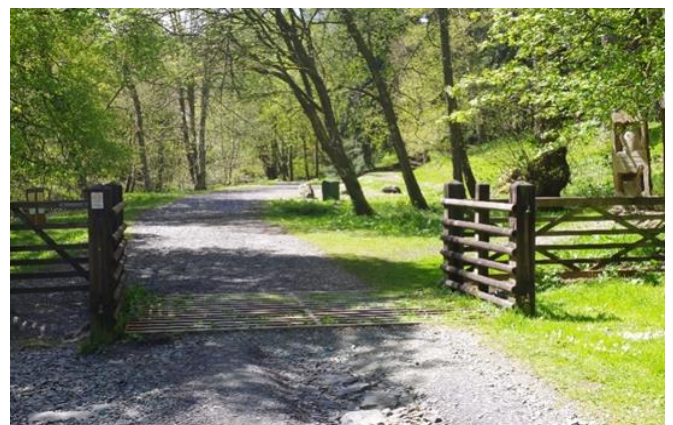
Old Village upper car park

There is level access from Dam Trail car park to:

- Picnic benches
- Dam Trail



Picnic area on the Dam Trail



Blue badge parking for Dam Trail

Note: You can drive the 12 miles perimeter road which will takes a circular loop around the Lake Vyrnwy reservoir.



Access with steps

There are steps from the Main Car Park to:

- Picnic benches
- Artisan's café
- Lake Vyrnwy retail units

There are steps from the Dam Trail to:

- Dam construction memorial plaques
- Lake Vyrwny dam

There are steps from the Hafren Dyfrdwy Ranger Office to:

- First aid room



From the Dam Trail you can climb the 92 steps back to the top of the dam.



Hearing

- Some staff have disability awareness training.
- We've created a designated quiet space at the back of the Main car park where visitors can take a little time out. Nestled above the trickling river, the mindfulness space has some family seating, and is wheelchair accessible.



Visual

- Accessible parking bays are clearly signposted with road markings
- Some venues such as visitor cinema, bird hides and Artisan's café have low lighting.



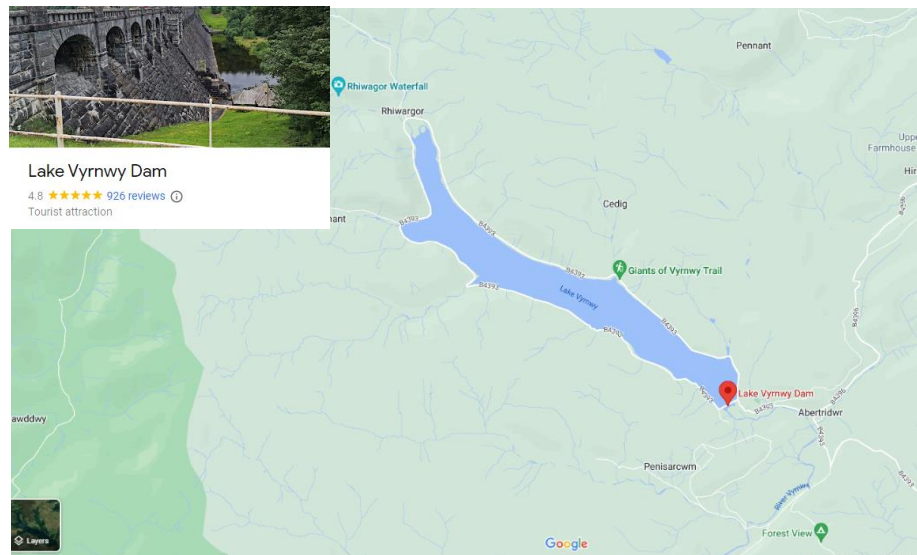
General

- There is at least 1 public toilet for disabled visitors.
- Some staff have disability awareness training.

Getting here

Address:

Lake Vyrnwy
Llanwddyn
Oswestry
SY10 0LZ



Travel by public transport

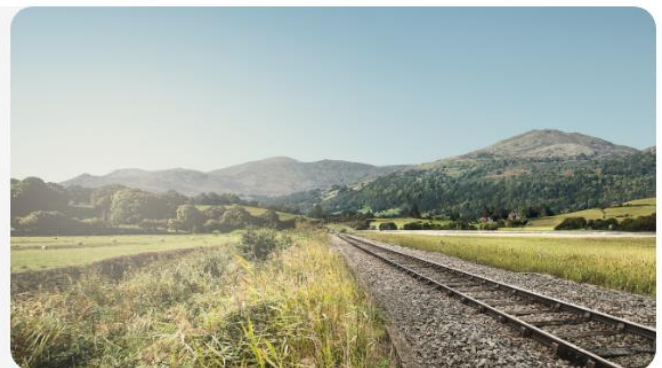
- You can get to Lake Vyrnwy by bus. Buses are infrequent and run between Oswestry and Lake Vyrnwy once a week. The nearest bus stop is located at the end of Lake Vyrnwy dam providing connections to Oswestry (T82). The bus stop is 0.01 miles / 10m from the end of the dam. See link for bus timetable: <https://bustimes.org/services/t82-vyrnwy-dam-oswestry-via-llanfyllin-2>
- Welshpool Station is the closest railway to lake Vyrnwy and has step free access. It is Approximately 35 minutes from Lake Vyrnwy via car. See link for timetables and more details: <https://tfw.wales/places/stations/welshpool>.

Welshpool

Address and directions

Welshpool station
adjacent to Welshpool Relief Road
Welshpool
Powys, SY21 7AZ

[View on Google Maps](#)



Parking

We have 2 car parks in the Visitor Hub – Upper car park and the Main car park. There are accessible parking spaces in each. Parking in the Upper car park is less than 50 meters from Artisan's café entrance and Coed y Capel bird hide.

Parking tariff:

- £2 for up to 2 hours
- £4 all day

Parking tariff for RSPB members (membership card must be displayed with ticket):

- £1 for up to 2 hours
- £2 all day

There is a drop-off point at the visitor toilet block; 20 minutes short stay no return within 1 hour. The drop-off point has ramp access to our accessible toilet facilities.

From the Upper car park to the dam, and visitor toilet block, there is level access. There is a permanent ramp.



Accessible ramp to toilet block, information point and dam

There are 2 blue badge parking spaces available at the Upper car park and 6 available in the Main car park.

There are plenty of laybys along the Lake's 12-mile perimeter road, where you can enjoy the view. Llechwedd-Du and Old Village car parks are free and have accessible picnic benches and viewpoints.

Arrival

Path to Lake Vyrnwy dam and welcome point

- From the Upper car park, there is level access.
- The path is sloped and separated from the road by fence.
- The 50m section between path from the Upper car park and the end of the dam is not fenced off from the road. Care should be taken here.
- The dam does not have a dropped kerb. Please be mindful that there will be traffic entering and leaving Lake Vyrnwy via the dam.



Road bridge over Lake Vyrnwy dam

Path to HD offices and visitor cinema

- From the Upper car park, there is level access.
- The path is sloped and separated from the road by fence.
- You will need to cross 15m section of road between path from the Upper car park and the visitor cinema and education room.
- The path is sloped.



Hafren Dyfrdwy office and visitor cinema and education building

Main entrance

- The main entrance has level access.
- The door is 950mm wide.
- The main door is push to enter and opens inwards.

Getting around inside

Visual Impairment - General Information

- We have high color contrast between walls and doorframes.
- Some parts of the venue have low lighting.

Visitor toilet

- The toilet door is 800mm wide.
- There is 1400mm in front of the toilet. The toilet seat is 450mm high. The toilets have handrails.
- The sink is 750mm high and accompanied by a hand dryer 1050mm above floor height.
- Emergency pull cord available



Visitor toilet located in Hafren Dyfrdwy office and visitor cinema building

Visitor Cinema and Information Point

Access

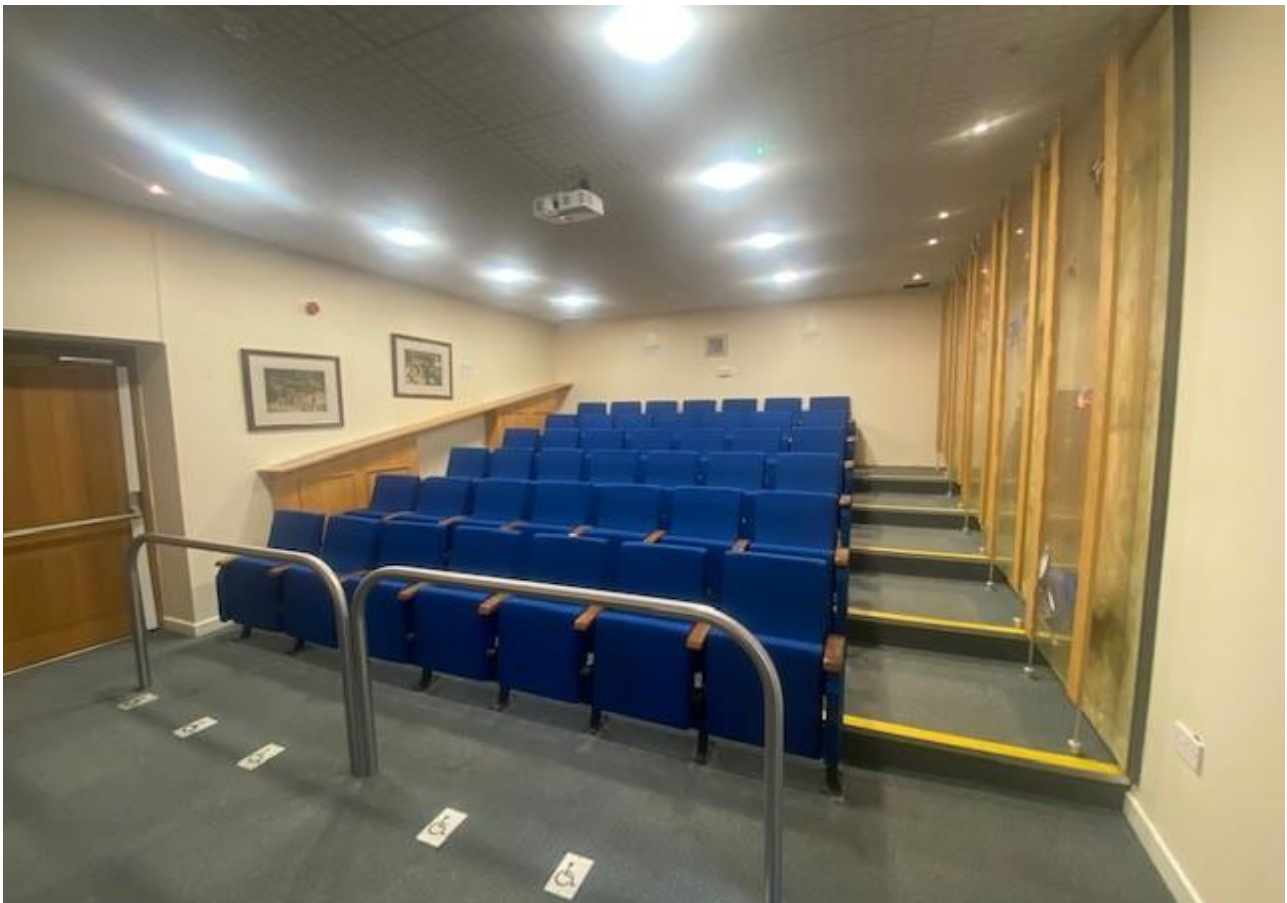
- It is 3100mm from the main door to the visitor cinema. The surface is level.
- The cinema door is 1500mm wide.
- There are 6 wheelchair viewing spots in the cinema.

Hearing

- Subtitles are available

General

- There are 42 seats in the cinema.
- If you require special assistance or would require a more private viewing arrangements, please speak to our on-site Ranger team.



Visitor cinema

Getting around Outside

Visitor public toilets with disabled access

- Men's toilets have 4 cubicles and 3 urinals and 2 large sinks
- Women's toilets have 6 cubicles and 3 large sinks
- Women's and Men's toilets have baby changing facilities
- Disabled public toilet located around the back of the building
- Ramp (3500mm) and steps up to toilets
- There is a 20 minute drop off point below permeant ramp



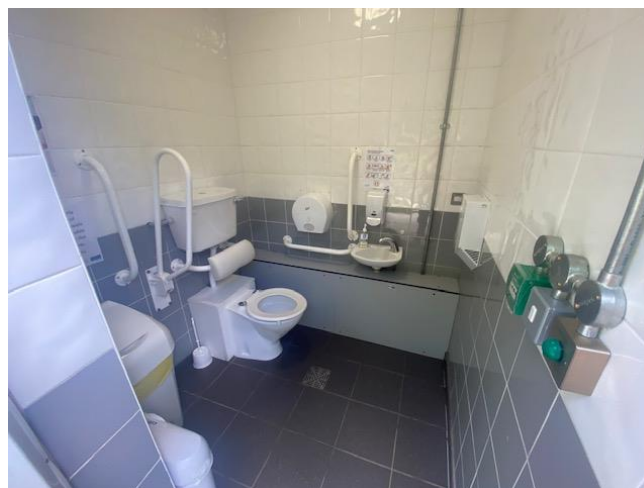
Visitor toilet block



Ramp to visitor toilet block

Disabled toilet

- The toilet door is 800mm wide.
- There is 950mm in front of the toilet. The toilet seat is 450mm high. The toilets have handrails.
- The sink is 750mm high and accompanied by a hand dryer 950mm above floor height.
- Emergency pull cord available



Visitor toilet block - disabled toilet

Places to eat and drink

Artisans Café

- Level access from car park to entrance. Entrance is 3000mm wide
- Disabled toilet located within building
- Route to public toilets and dam from café is 6000mm or more.

Picnic area's

Dam Trail

- The Dam Trail picnic area is accessible from the Main car park with a wheelchair friendly route.
- Blue badge parking is available adjacent to our most accessible Dam Trail, just turn left off the B4393 on your approach to the dam.



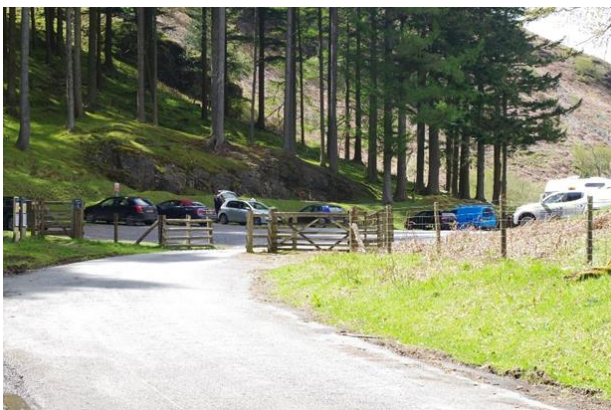
Dam Trail route from main car park.



Gravel path forming part of the Dam Trail

Rhiwargor Waterfall:

- Level car park
- Terrain to waterfall is along forest tracks, fields, and steep gradients.



Rhiwargor car park



Picnic area at Rhiwargor car park

RSPB Bird hides

- Gravel/ dirt track towards Centenary bird hide
- Lake side bird hide is mainly a dirt track with 3 steps



RSPB Centenary hide



RSPB Lakeside hide

Llechwedd-Du Picnic Area

- Level access to picnic benches and viewpoint
- 2 accessible picnic benches are located at the end of a wheelchair friendly path and turning circle designed to accommodate wheelchairs, mobility scooters and prams.



Llechwedd-Du picnic area and accessibility friendly benches

Old Village Picnic Area

- Level access to picnic area and viewpoint
- Accessible trail to the Giant Hand of Vyrnwy



Trail to the Giant Hand of Vyrnwy and view from Old Village car park

RSPB Children's play area:

- Level entrance through 800mm gate into play area
- Accessible benches for picnics



Level access into play area

Customer care support

- Assistance dogs are welcome throughout our site.
- Toilet areas include Hafren Dyfrdwy offices, public toilets and Artisans Café located around the visitor hub.
- At this time, we do not currently have designated charging points for mobility scooters

Emergency evacuation procedures

- We have emergency evacuation procedures for disabled visitors.
- In the event of an evacuation the Ranger Team will proceed to evacuate the buildings and the public are asked to wait at the fire evacuation point located in the Upper car park.

Customer care support

- Some staff have disability awareness training.
- Please ask for Ellen Stimpson or Choe Howard for any accessibility enquires via the contacts below.

Contact us

- Email: VisitorSites@hdcymru.co.uk
- Phone Number: 01691870571
- Website: <https://www.hdcymru.co.uk>
- Social media: <https://www.facebook.com/stwlakevyrnwy/>



Lake Vyrnwy dam